

## Lonestar 6358: Details

**AS LOW AS \$250**  
**FULLY CUSTOMIZABLE &**  
**PROFESSIONALLY DESIGNED**

<b>Style</b>	Tuscan
<b>Exterior Materials</b>	Brick & Stucco
<b>Bedrooms</b>	4
<b>Bathrooms</b>	5 / 1
<b>Total Living Sq Ft</b>	6,358
<b>Total Covered Sq Ft</b>	7,761
<b>Dimensions (w x d x h)</b>	115'4" x 66'2" x 35'10"

	First Floor	Other Floors	Other Features
<b>Square Footage</b>	4,324	2,034	Bar      Playroom
<b>Bedrooms</b>	1	3	Butler Pantry      Unfinished Storage
<b>Ceiling Heights</b>	10'0"	9'0"	Cedar Closet
<b>Master Bedroom</b>	X		Christmas Storage
<b>Dining Room</b>	X		Computer Alcove
<b>Living Room</b>	X		Covered Rear Porch
<b>Family Room</b>	X		Foyer
<b>Game Room</b>		X	His & Her Master Bath
<b>Study</b>	X		Home Office
<b>Guest Room</b>		X	Interior Balcony
			Optional Balcony

<b>Garage(s)</b>	Rear Load Straight In
<b>Stairs</b>	Split (2 flights)

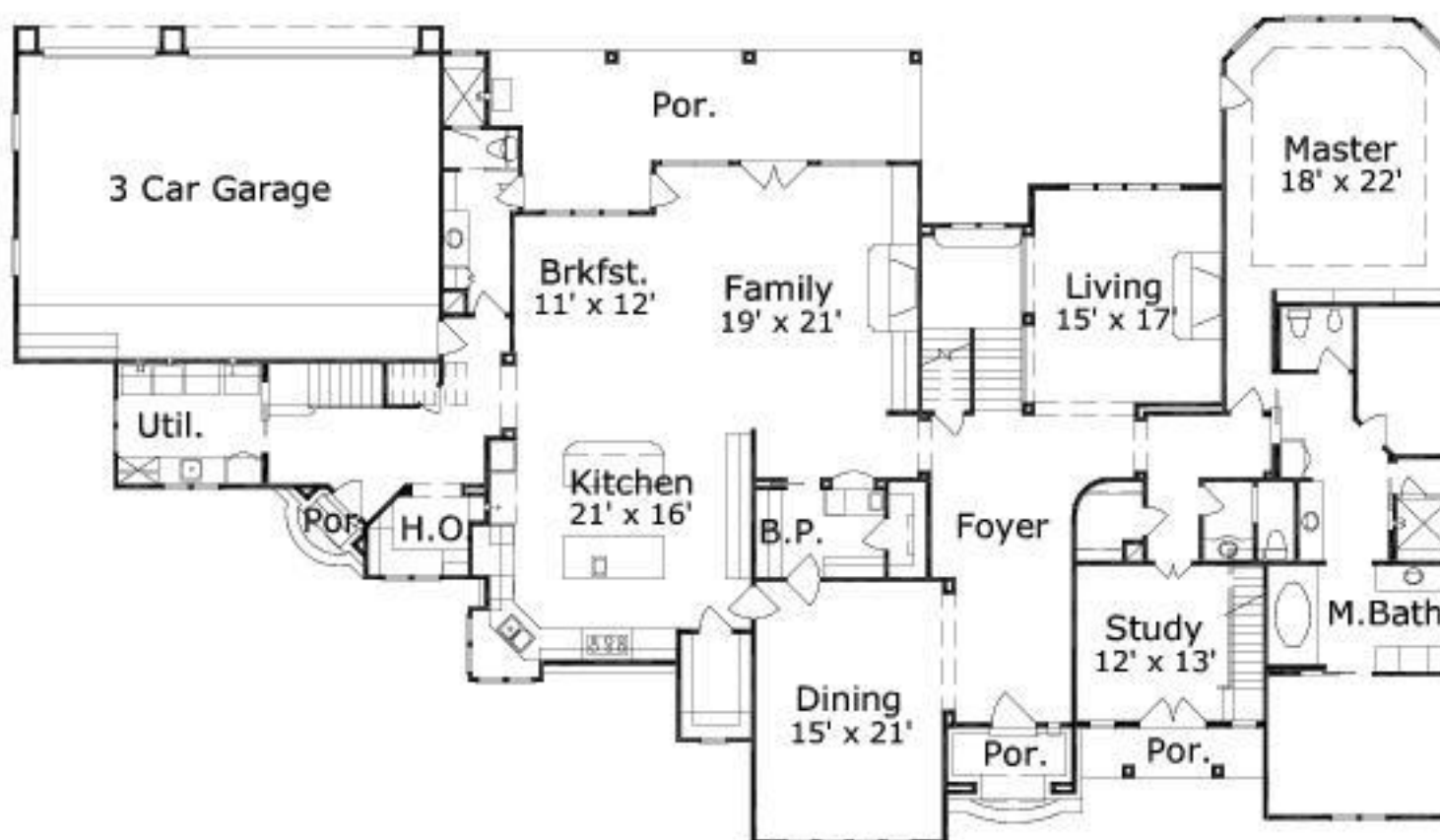
### Notes

The living of area of this plan does not include the bonus room on the second floor. The additional square footage of the bonus room is 702 square feet.

## Lonestar 6358: Front Elevation



## Lonestar 6358: Floor 1



## Lonestar 6358: Floor 2

