

## Judson 4607: Details

**AS LOW AS \$250**  
**FULLY CUSTOMIZABLE &**  
**PROFESSIONALLY DESIGNED**

<b>Style</b>	Mediterranean
<b>Exterior Materials</b>	Stucco & Cultured Stone
<b>Bedrooms</b>	4
<b>Bathrooms</b>	4 / 2
<b>Total Living Sq Ft</b>	4,607
<b>Total Covered Sq Ft</b>	7,283
<b>Dimensions (w x d x h)</b>	94'0" x 97'0" x 40'3"

	First Floor	Other Floors	Other Features
<b>Square Footage</b>	3,179	1,428	Art Niche Interior Balcony
<b>Bedrooms</b>	2	2	Bar Master Fireplace
<b>Ceiling Heights</b>	10'0"	9'0"	Butler Pantry Motor Court
<b>Master Bedroom</b>	X		Coffee/Juice Bar Outdoor Kitchen
<b>Dining Room</b>	X		Covered Front Porch Playroom
<b>Living Room</b>	X		Covered Terrace Terrace
<b>Family Room</b>	X		Entry Courtyard Wine Room
<b>Game Room</b>		X	Exercise Room
<b>Study</b>	X		Exterior Balcony
<b>Guest Room</b>	X		Foyer
			Home Office

<b>Garage(s)</b>	Side Load Swing (Entry Facing)
<b>Stairs</b>	Standard (2 flights)

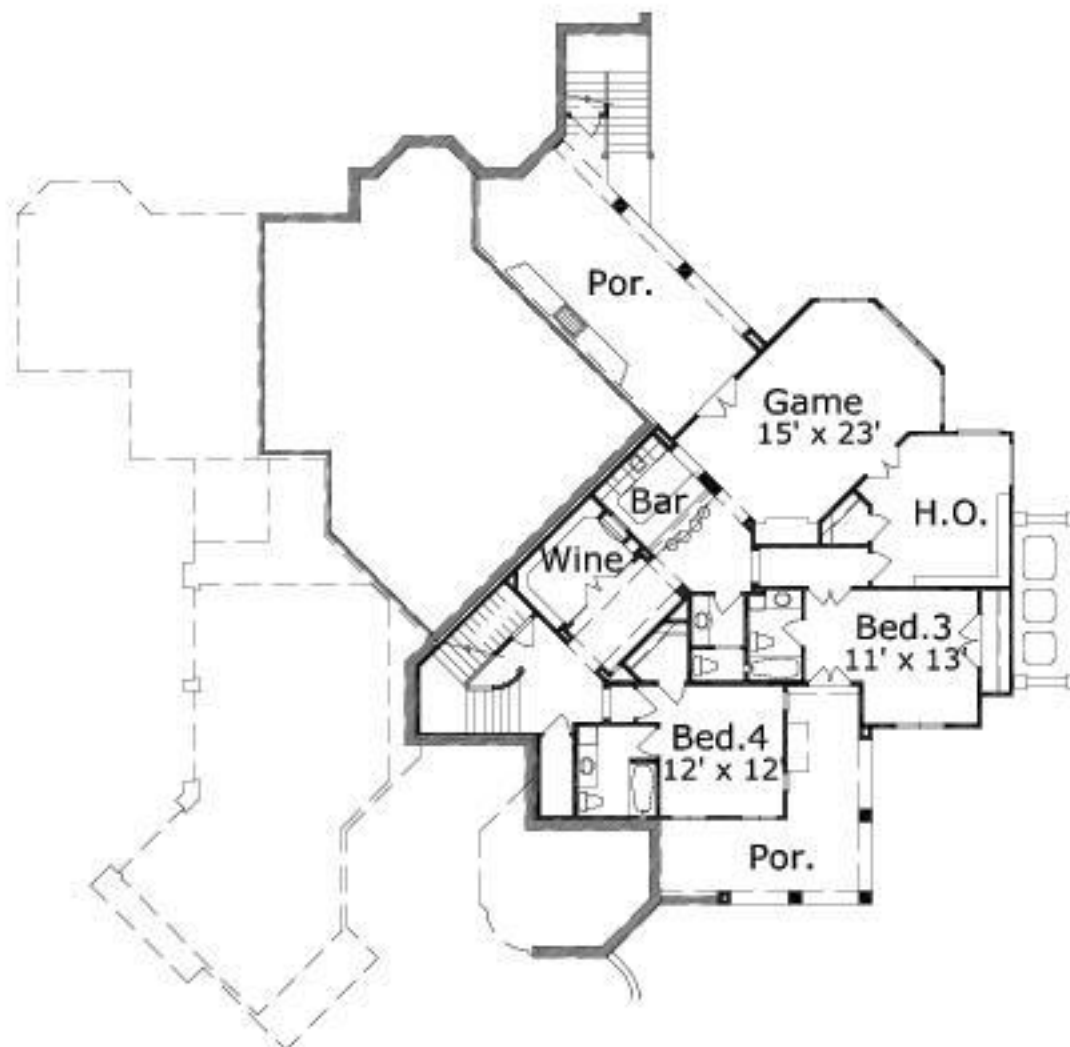
### Notes

The living area square footage does not include the future bedroom and bath. The additional square footage is 295 square feet.

## Judson 4607: Front Elevation



## Judson 4607: Floor 1



## Judson 4607: Floor 2

