

## Katina 4620: Details

**AS LOW AS \$250**  
**FULLY CUSTOMIZABLE &**  
**PROFESSIONALLY DESIGNED**

<b>Style</b>	Country Home
<b>Exterior Materials</b>	Brick
<b>Bedrooms</b>	4
<b>Bathrooms</b>	3 / 1
<b>Total Living Sq Ft</b>	4,620
<b>Total Covered Sq Ft</b>	6,564
<b>Dimensions (w x d x h)</b>	69'8" x 71'6" x 35'3"

	First Floor	Other Floors	Other Features
<b>Square Footage</b>	2,810	1,810	Butler Pantry
<b>Bedrooms</b>	1	3	Covered Terrace
<b>Ceiling Heights</b>	10'0"	9'0"	Foyer
<b>Master Bedroom</b>	X		Interior Balcony
<b>Dining Room</b>	X		Playroom
<b>Living Room</b>	X		Porte Cochere
<b>Family Room</b>	X		
<b>Game Room</b>		X	
<b>Guest Room</b>		X	

<b>Garage(s)</b>	Front Load Straight In
<b>Stairs</b>	Standard

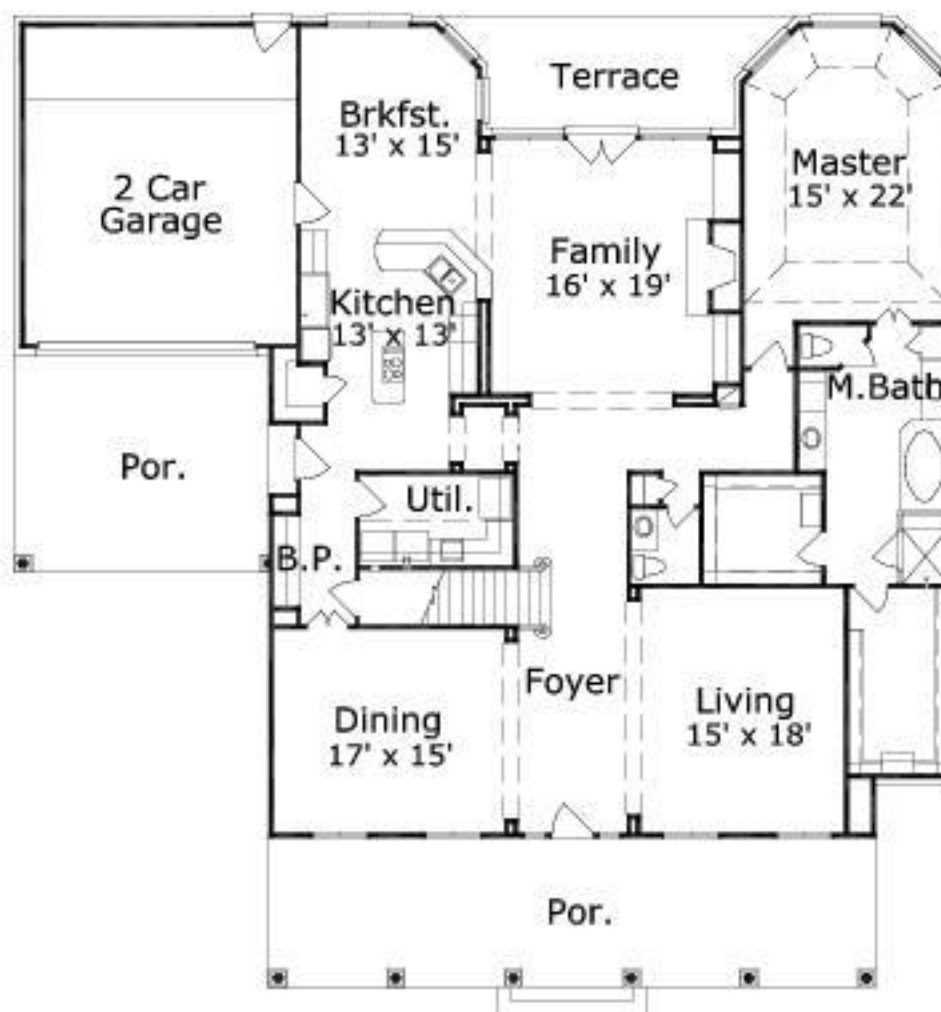
### Notes

The living area of this plan does not include the future quarters. The additional square footage for the future quarters is 456 square feet.

## Katina 4620: Front Elevation



## Katina 4620: Floor 1



## Katina 4620: Floor 2

