

## Litchfield 7015: Details

**AS LOW AS \$250**  
**FULLY CUSTOMIZABLE &**  
**PROFESSIONALLY DESIGNED**

<b>Style</b>	French
<b>Exterior Materials</b>	Stone
<b>Bedrooms</b>	4
<b>Bathrooms</b>	6 / 2
<b>Total Living Sq Ft</b>	7,015
<b>Total Covered Sq Ft</b>	8,923
<b>Dimensions (w x d x h)</b>	89'0" x 100'3" x 37'0"

	First Floor	Other Floors	Other Features
<b>Square Footage</b>	3,534	3,481	Bar Interior Balcony
<b>Bedrooms</b>	1	3	Butler Pantry Optional Elevator
<b>Ceiling Heights</b>	12'0"	10'0"	Cabana Bath Outdoor Fireplace
<b>Master Bedroom</b>	X		Coffee/Juice Bar Outdoor Kitchen
<b>Dining Room</b>	X		Computer AlcovePorte Cochere
<b>Living Room</b>	X		Covered Front PorchSeparate Master Closet
<b>Family Room</b>	X		Covered PavillionTheater/Media
<b>Game Room</b>		X	Foyer Wine Room
<b>Study</b>	X		Groin Vault
<b>Guest Room</b>		X	Hidden Storage
<b>Home Theater</b>		X	Home Office

<b>Garage(s)</b>	Front Load Straight In
<b>Stairs</b>	Standard (2 flights)

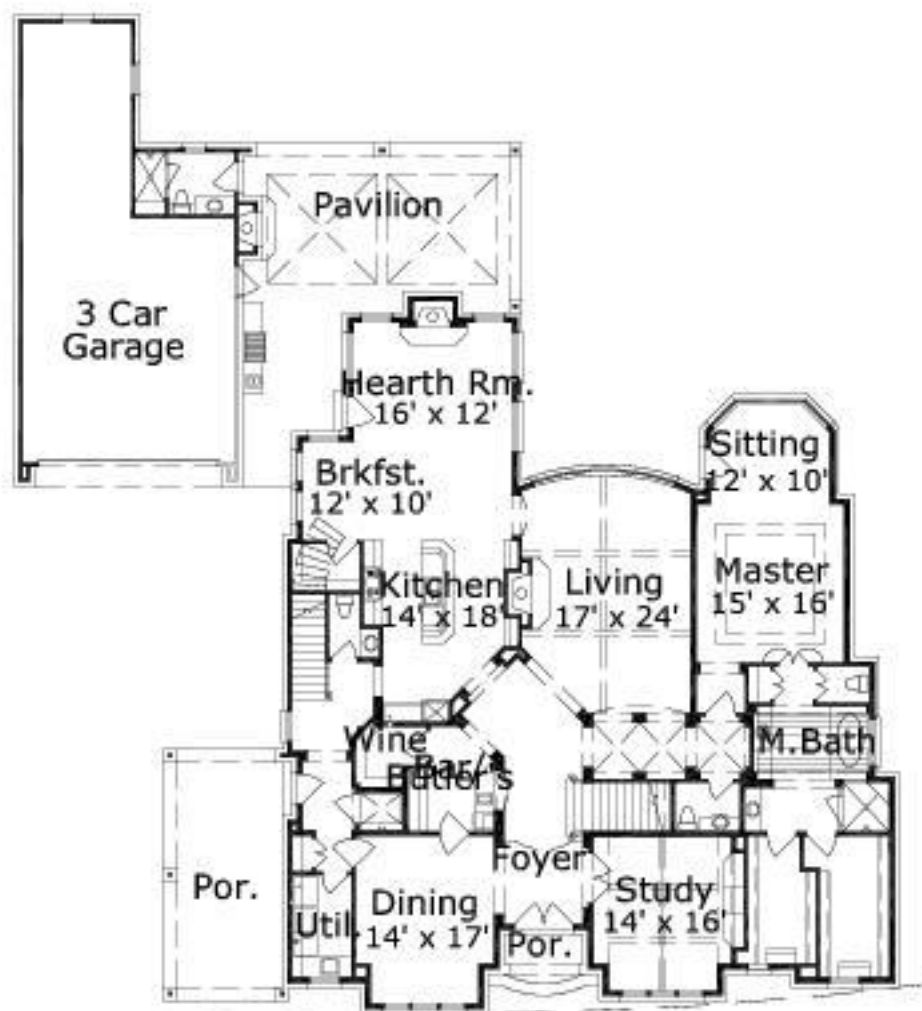
### Notes

The pavillion/cabana bath on the first floor is not included in the living area sq. ft. This would be an additional 692 sq. ft. to the living area.

## Litchfield 7015: Front Elevation



## Litchfield 7015: Floor 1



## Litchfield 7015: Floor 2



## Litchfield 7015: Floor 3

