

## Ainslie 3505: Details

**AS LOW AS \$250**  
**FULLY CUSTOMIZABLE &**  
**PROFESSIONALLY DESIGNED**

<b>Style</b>	Beach House
<b>Exterior Materials</b>	Stucco
<b>Bedrooms</b>	3
<b>Bathrooms</b>	3
<b>Total Living Sq Ft</b>	2,864
<b>Total Covered Sq Ft</b>	5,051
<b>Dimensions (w x d x h)</b>	59'4" x 40'8" x 34'6"

	First Floor	Other Floors	Other Features
<b>Square Footage</b>	1,728	2,864	Covered Terrace
<b>Bedrooms</b>	0	3	Exterior Balcony
<b>Ceiling Heights</b>	9'0"	9'0"	Storage
<b>Master Bedroom</b>		X	
<b>Dining Room</b>		X	
<b>Living Room</b>		X	
<b>Study</b>		X	
<b>Guest Room</b>		X	

<b>Garage(s)</b>	Front Load Straight In
<b>Stairs</b>	Standard (2 flights)

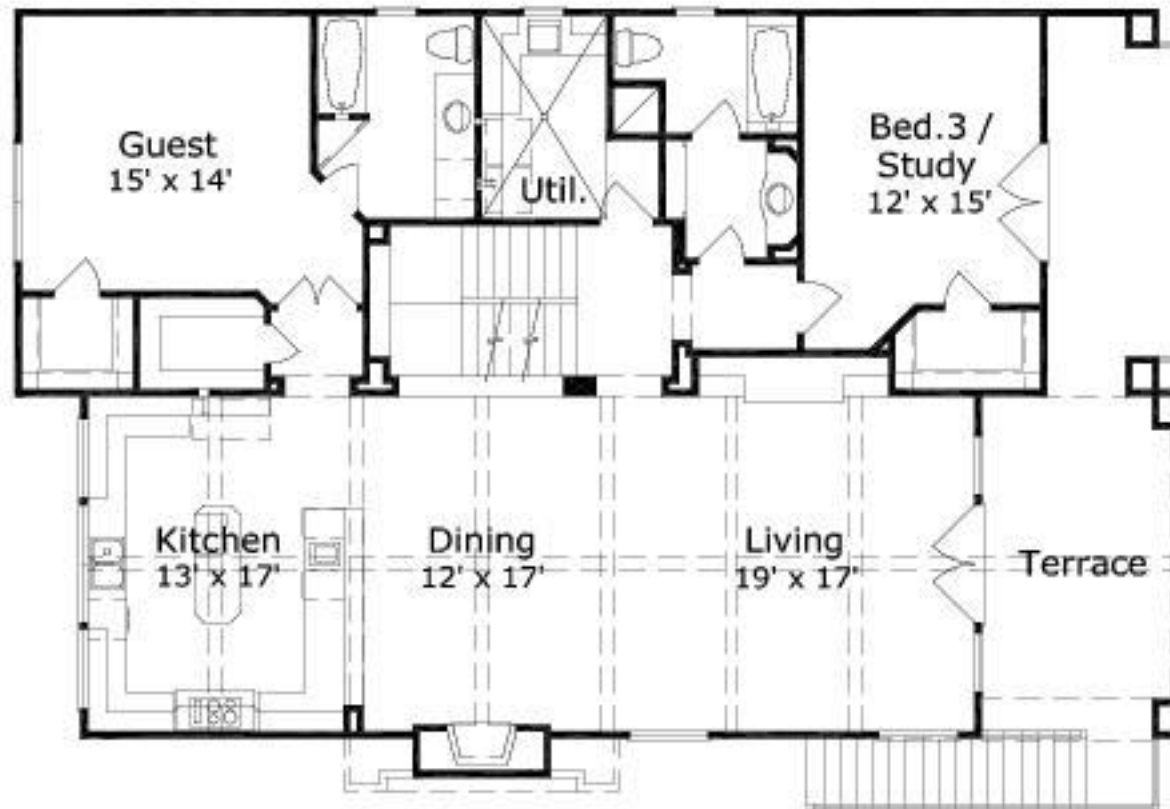
## Ainslie 3505: Front Elevation



## Ainslie 3505: Floor 1



## Ainslie 3505: Floor 2



## Ainslie 3505: Floor 3

