

## The Nichels 5234: Details

**AS LOW AS \$250**  
**FULLY CUSTOMIZABLE &**  
**PROFESSIONALLY DESIGNED**

<b>Style</b>	Traditional
<b>Exterior Materials</b>	Brick
<b>Bedrooms</b>	5
<b>Bathrooms</b>	4 / 2
<b>Total Living Sq Ft</b>	5,234
<b>Total Covered Sq Ft</b>	7,192
<b>Dimensions (w x d x h)</b>	100'0" x 63'6" x 35'6"

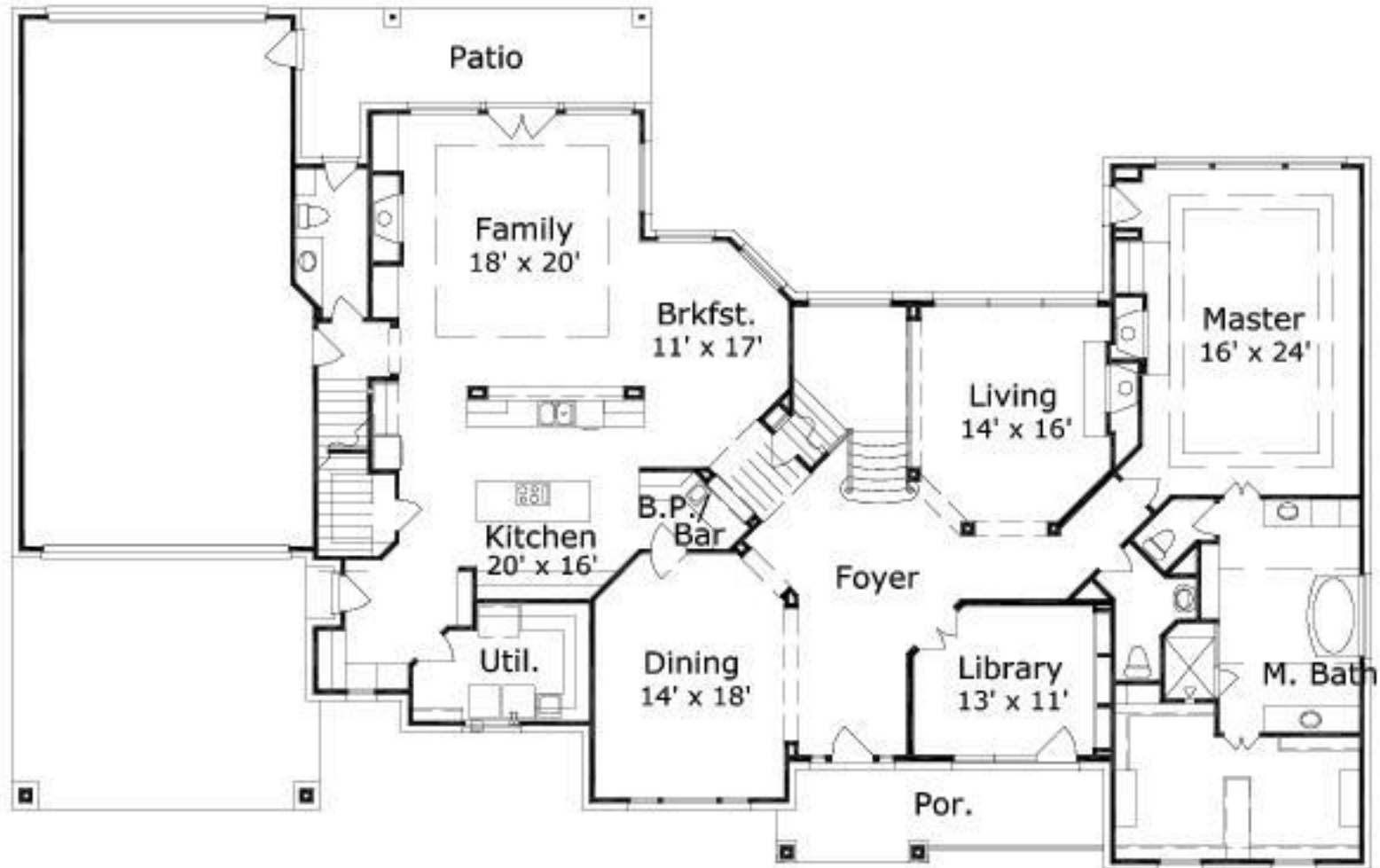
	First Floor	Other Floors	Other Features
<b>Square Footage</b>	3,434	1,800	Bar
<b>Bedrooms</b>	1	4	Butler Pantry
<b>Ceiling Heights</b>	10'0"	9'0"	Computer Alcove
<b>Master Bedroom</b>	X		Covered Front Porch
<b>Dining Room</b>	X		Covered Rear Porch
<b>Living Room</b>	X		Home Office
<b>Family Room</b>	X		Master with Sitting Area
<b>Game Room</b>		X	Optional Pool Bath
<b>Study</b>	X		Porte Cochere
<b>Guest Room</b>		X	
<b>Home Theater</b>		X	

<b>Garage(s)</b>	Front Load Straight In
<b>Stairs</b>	Standard (2 flights)

## The Nichels 5234: Front Elevation



## The Nichels 5234: Floor 1



## The Nichels 5234: Floor 2

